

The High Line, New York



Report made by

- **Name:** Joan
- **Social media handles:** @joan_pahisa (Twitter, Instagram), @joanp (TabiFolk)
- **Date:** September, 2022.

General information of the attraction

- **Name of the attraction:** The High Line Park
- **City and country:** New York, USA
- **Description:** A former elevated railway cargo line transformed into a 2.3km long park in the heart of Manhattan, it's one of the hidden gems of NY. Away from the noisy streets, it offers nature, temporary art exhibits, a peaceful walk and nice views of the city.
- **Opening hours:** Depending on the season. December to April: 7am to 7pm; April & May: 7am to 10pm; June to September: 7am 11pm; October & November: 7am to 10pm. Visitors have to start leaving around 30 minutes before closing times.
- **Getting there:** You can get there either by subway or by bus. Nearby accessible subway stops are 34 St Penn Station (lines A, C, E, 1, 2, 3), 34th St Hudson Yards (line 7) or 14th St & 8th Ave (A, C, E, L). 34 St Penn Station is about 1km away from the nearest accessible entrances (Ramp at 34th St -between 11th and 12th Ave near a MegaBus stop-, which is at one end of the park, or elevator at 30th St - between 10th and 11th on the southern sidewalk- or ramp at 30th St inside Hudson Yards). 34th St Hudson Yards is only 200m away from the aforementioned entrances. Finally, 14th St &

8th Ave is 500m away from the elevators at either 14th St or Gansevoort St (the other end of the park). You can also get there by bus (lines M11, M14, M23, M34). For information on transportation accessibility in the city, you can check [New York's accessibility report](#).

- **Discount:** Admission is free for everyone.
- **Buying the tickets:** No need for tickets.

Accessibility information (you may check boxes + write small descriptions)

- **ACCESSIBLE ROUTE**

Special entrance: There are several entrances to the High Line Park. Accessible entrances with either slopes or elevators to reach the elevated path are the following: Elevators (Gansevoort Street, 14th St, 23rd St, 30th St -elevator at 16th is currently out of service-); Ramps/Slopes (34th St, between 11th and 12th Ave on the southern sidewalk; 30th Street inside Hudson Yards near the elevator at 30th St) . Otherwise, there are stairs to access the park at many street intersections along the route. If you have trouble climbing slopes with grainy pavement, we recommend using one of the elevators. You can [check the elevator and the accessible entrances' status here](#), as slope access is also seasonal. When active, the entrance slope at 34th St closes at dusk.

Inaccessible areas: There are a couple of viewing & resting areas with steps to access them, although there are also viewing and resting spots near them without the need of these steps.

Specific restrictions: None.

- **PHYSICAL ACCESSIBILITY**

Ramps: There are mild ramps or slopes along the route made of smooth tile (see Photo 2 below) or smooth boardwalk flooring.

Elevators: 4 working elevators in total at Gansevoort Street, 14th St, 23rd St and 30th St (see Photo 4 below of elevator at 30th St). [Website to check elevator status](#).

Steep slopes: Even though the long slope to access the High Line at 34th St is not steep, it has got grainy type flooring, which may be difficult to climb for some manual wheelchair users. The use of the elevator or the ramp at 30th St is recommended for these users.

- **Types of flooring:** There is a stretch with grainy type flooring between 34th St and 30th St (see Photo 1 below). The rest is either smooth concrete tiles or smooth boardwalk flooring.
- Steps and/or stairs:** Not along the route. There are stairs to access the park at several points (although also the aforementioned elevators). There are also some steps to access lower or upper levels of a couple of resting areas (but there are plenty of other resting and viewing areas).
- Narrow doorways/paths or tight turns:** None.
- Elements blocking the view:** As it's a high walkway above the city, some of the fences around it are made of concrete of about 120cm high and partially block the view for wheelchair users, little people or children (see photos below to get a feel of the fences). Nevertheless, the view above the fences' line of sight, as it's full of interesting buildings and the likes, is also nice.
- Accessible toilet:** There are two wheelchair accessible restrooms with grab bars (although not on both sides and with clearance only on one side) located at Gansevoort St and 16th St (see Photo 5 below).
- Rental wheelchairs:** None.
- **Distance:** From end to end, the High Line is 2.3km long. You can walk the whole park or just bits of it.
- Places to sit&rest:** There are plenty of benches along the route. Some of them are also under cover.
- **VISUAL ACCESSIBILITY**
 - Tactile paving:** None.
 - Guiding system:** None.
 - Audioguide:** There are free tours available twice or thrice a week. You can also book private guided tours. For more information check [The High Line Tours website](#).
 - Braille:** Few of the signs have descriptions in Braille. Most of them are present in the temporary art exhibitions and it depends on each exhibition.
- **Contrast and size of signage:** Good. Most signage consists of white letters on dark brown or black background (see Photo 6).

- **Contrast of architectural elements:** As it's a park, some architectural elements blend with the present nature, but patches of grass generally contrast with the lighter color of the flooring. Some of the stairs or benches within the park have very poor contrast.
- Touchable 3D models:** None.
- **HEARING ACCESSIBILITY**
 - Sign language:** We don't know if tours can be arranged in sign language. Otherwise, there are no audio or video guides altogether. Questions regarding tours can be addressed to tours@thehighline.org.
 - Hearing loop:** None.
 - Captions:** There is no audiovisual media throughout the park, except for media that may be present in temporary exhibitions.
- **COGNITIVE ACCESSIBILITY:**
 - Easy-to-read:** None.
 - Pictograms:** Aside from icons marking toilets, elevators, restaurants, etc. there are no specific pictograms for cognitive accessibility.
- **SENSORY AND ORGANIC ACCESSIBILITY**
 - High noise level or loud sounds:** Low noise levels, except for the occasional muffled ambulance or police siren coming from the streets below or if there happens to be an event going on. You can check for [events on The High Line here](#).
 - Potential issues with lighting:** Similar to the ones that you may find on a regular street.
 - Bright colors:** Similar to the ones that you may find on a regular street.
 - Strong smells:** None detected.
 - Need of interaction with other people:** None.
 - Silent or sensory room:** None, although it's one of the calmest places in Manhattan besides Central Park.
 - Food availability:** It depends on the season (for instance, on winter there are less options than during spring or summer). You can check [available food options here](#).

Nevertheless, if you exit the park, there are plenty of food options on the streets below.

- **EXTRA FEATURES OR BARRIERS:**

- **Other:** There is also a wheelchair accessible picnic table along the way.
- **URL to information:** [The High Line official site](#) (scroll down to the “Park access & info” and to the “Accessibility” sections). [An online review of the park from a wheelchair visitor](#) (credits to the accessible restroom photo and the picnic table info).

Overall score ★★★★★

- **Score: 4 stars.**

- **Summary:** The High Line is really wheelchair accessible. Think of it as an elevated walkway with 4 elevators along the way to access it and a couple of long access slopes, although these are not open all year long. In contrast with other parks, its pavement is smooth, as its mostly concrete tiles or well placed and maintained boardwalks and the occasional ramps have a mild incline. Unfortunately, there is a lack of tactile pavement and many of the access stairways or steps transforming into benches have poor contrast. On the other hand, there are plenty of rest areas and the general atmosphere is calm and relaxing. Free admission for everyone is a great bonus.

Photos

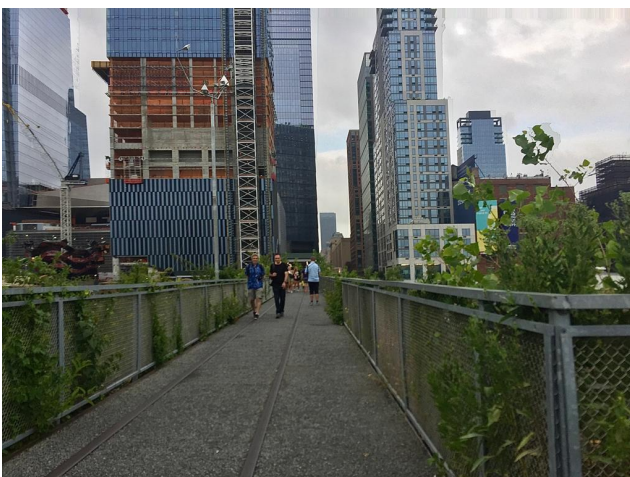


Photo 1. Rails and grainy pavement.



Photo 2. Smooth concrete tiles and mild slope.

Trouble with Me Your (In)Accessible Travel Experiences' Podcast



Photo 3. Benches and fences.

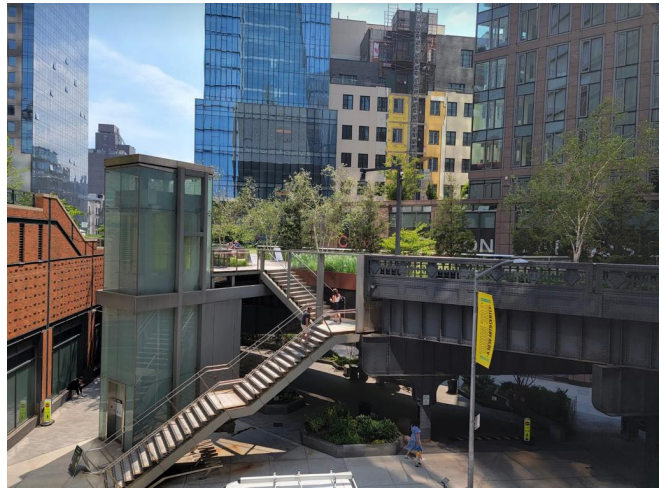


Photo 4. Access stairs and elevator at 30th Street.



Photo 5. Accessible toilet.



Photo 6. Signage with map and rules of the park.